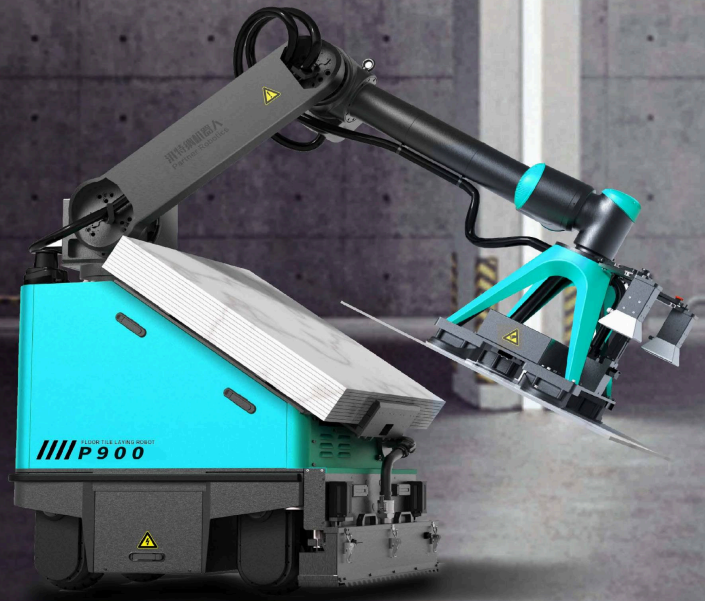


Floor Tile Paving Robot P900



Industry Status

Traditionally, floor tile paving is a labor-intensive task, which generally has the following issues:

Low efficiency

Inconsistent Quality

High labour intensive

Labour Shortage

Product Introduction

The P900 Floor Tile Paving Robot is an automated robot designed for indoor tile laying. Various advanced technologies such as SLAM navigation, global elevation leveling system for tiles, visual positioning system, vibration system and tile glue laying system. These technologies enable automatic moving and precise paving operations. This robot has been widely used in residential buildings, high-speed railway stations, airports, office buildings, schools, and other scenarios. It has been recognized as a high-tech product in Guangdong Province and its robotic technology achievements have been identified as reaching an international advanced level by authorities.



Efficient



High Quality



Cost-down



Intelligent

Main parameters of the product

Overall dimensions	1150x800x1800mm	Efficiency	up to 18m ² /h
Weight	≤700kg	Tile size applicable(mm)	450x450, 600x600 800x800, 900x900
Load capacity	≤950kg	No-load movement speed	≤0.5m/s
Charging time	5-6h	Speed while paving	25-100mm/s
Endurance time	>6h	Obstacle height	≤530mm
Battery capacity	180Ah	Climbing ability	≤10°
Charging power	AC220V		
Single tile weight	≤20kg		

Applications

- The P900 Floor Tile Paving Robot has been widely used in projects in Guangdong Province, with a cumulative area of exceeding 20,000m². The paving quality has successfully regconized by stakeholders.



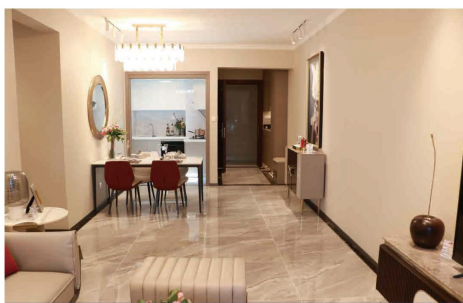
Boyue Bay Project



Yonchengui Phase III Project



Fenghuangtai Phase 1



Finished product white bricks



Finished product brown bricks



Finished product gray bricks



Innogreen Solution Pte Ltd
10 Admiralty Street,
#05-18 North Link Building
Singapore 757695

Tel: (65) 6352 3313
Fax: (65) 6352 0280
Email: sales@innogreen.com.sg

Innogreen
Solution Pte Ltd